

211.11.OR

DT STUDIO

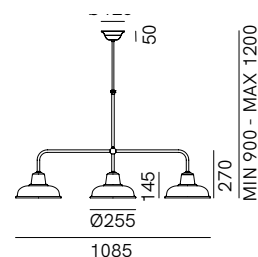
La collezione Contrada è contraddistinta da un design puro e rigoroso, che rende protagonista il materiale. Rame e ottone antichato conferiscono a lampadari, plafoniere e applique un grande impatto materico.

The Contrada collection features a pure and rigorous design, making the material the protagonist. Antique copper and brass give chandeliers, ceiling lamps and wall lamps an impressive material effect.



SPECIFICHE TECNICHE | TECHNICAL DATA

Tipologia Type	sospensione pendant
Ambiente Environment	indoor - outdoor
Materiali Materials	Ottone - rame Brass - copper
Fonte luminosa Light source	3 x Max 15W LED E27 (non inclusa not included)
Tensione Voltage	240 Vac 50-60 Hz
Dimmerazione Dimming	Taglio di fase IGBT / TRIAC Phase cut IGBT / TRIAC
Scatole Boxes	1
Volume totale Total volume	0,183 m ³
Peso lordo Gross weight	4 kg
Certificazioni Certifications	CE IP20



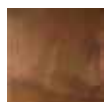
FINITURE | FINISHES

Montatura | Frame



O
Ottone Antichato
Antique Brass

Testa | Shade



R
Rame Antichato
Antique Copper