


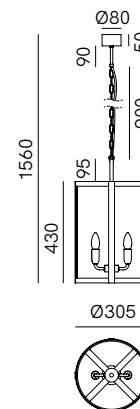
Nella collezione di lampade London la tradizione incontra suggestioni internazionali. Ne nascono lampade a sospensione, applique e plafoniere dove le trasparenze del vetro valorizzano la struttura in ferro anticato, creando inaspettati cambi di visione e atmosfere di sicuro impatto.

*The London collection of lamps combines tradition with international influences. The result is Italian brass pendant lamps, wall lamps and ceiling lamps, where the transparent nature of glass enhances the antique iron fixture, creating unexpected changes of vision and striking atmospheres.*



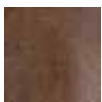
### SPECIFICHE TECNICHE | TECHNICAL DATA

<b>Tipologia   Type</b>	sospensione   pendant
<b>Ambiente   Environment</b>	indoor
<b>Materiali   Materials</b>	Ferro   Iron
<b>Fonte luminosa   Light source</b>	2 x Max 10W LED E14 (non inclusa   not included)
<b>Tensione   Voltage</b>	240 Vac 50-60 Hz
<b>Dimmerazione   Dimming</b>	Taglio di fase IGBT / TRIAC   Phase cut IGBT / TRIAC
<b>Scatole   Boxes</b>	1
<b>Volume totale   Total volume</b>	0,096 m <sup>3</sup>
<b>Peso lordo   Gross weight</b>	6 kg
<b>Certificazioni   Certifications</b>	CE EAC  IP20



### FINITURE | FINISHES

#### Montatura | Frame



FF  
Ferro Anticato  
Antique Iron

#### Vetro | Glass



Trasparente  
Transparent